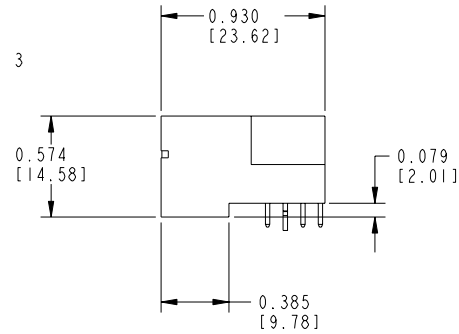
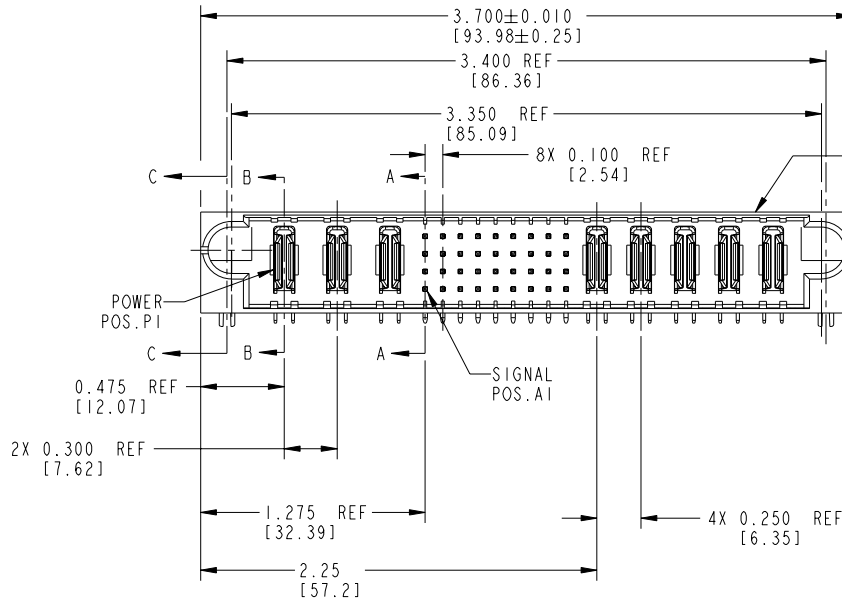
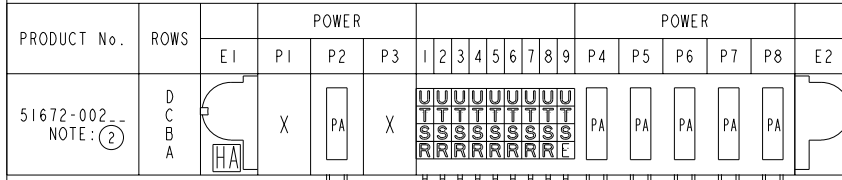
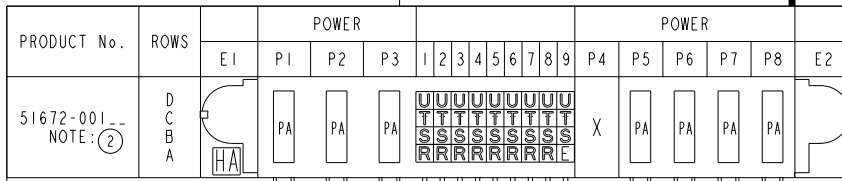


Tous droits strictement réservés. Reproduction ou communication à des tiers interdite sous quelque forme que ce soit sans autorisation écrite du propriétaire. Propriété de c FCI. Droits de reproduction FCI.

All rights strictly reserved. Reproduction or issue to third parties in any form whatever is not permitted without written authority from the proprietor. Property of FCI. Copyright FCI.



CONFIDENTIAL

CODE	DIM "M" ±0.010 [0.25]	CONTACT TYPE
E	0.220 [5.59]	SIGNAL
R	0.270 [6.86]	SIGNAL
S	0.270 [6.86]	SIGNAL
T	0.270 [6.86]	SIGNAL
U	0.270 [6.86]	SIGNAL
HA	N/A [N/A]	HOLD-DOWN
PA	N/A [N/A]	POWER
X		OMITTED

mat'l code				SEE NOTE 1		tolerances unless otherwise specified		CUSTOMER COPY	
ltr	ecn no.	dr	date	linear	.XX±.01/.XX±.3	projection	www.fciconnect.com		
A	V02392	JRW	10-09-00		.xxx±.005/.xx±.13	INCH/MM	title 3ACP + 36S + 5P		
B	V02924	EKK	12-12-00		.xxx±.0020/.xxx±.051	scale	RIGHT ANGLE SOLDER HEADER		
C	V12544	DAI	01-08-02	angles	0°±2°	1:1	product family PWRBLADE code 213		
D	DG05-0231	SJ	07/18/05	dr	C. BAROT 12-08-99		size dwg no 51672 sheet 1 of 3		
E	DG06-0011	CS	01/09/06	enr	J. BROWN 12-08-99				
				chr	J. BROWN 12-08-99				
				appd	J. BROWN 12-08-99				
sheet index	revision sheet	E 1	E 2	E 3					

cage code 22526

PDM: Rev:E

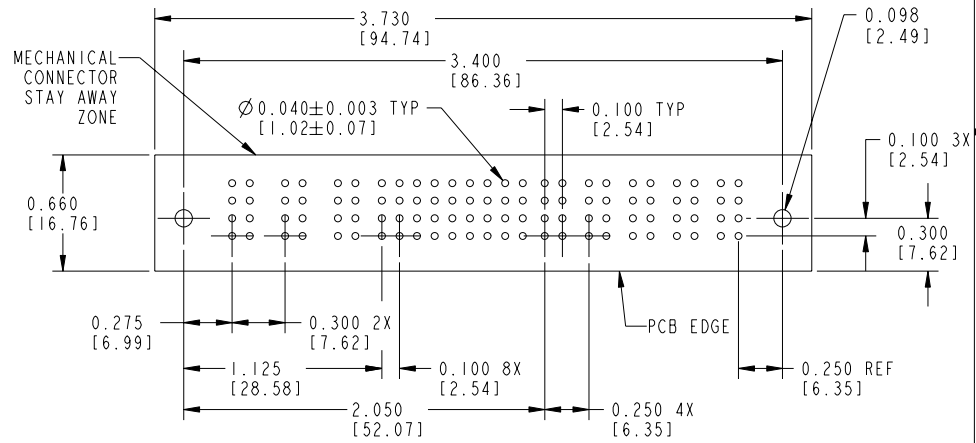
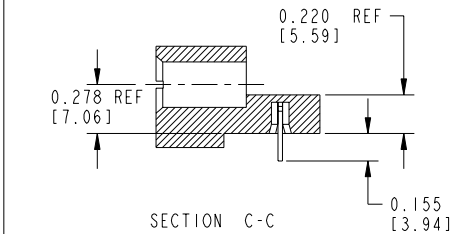
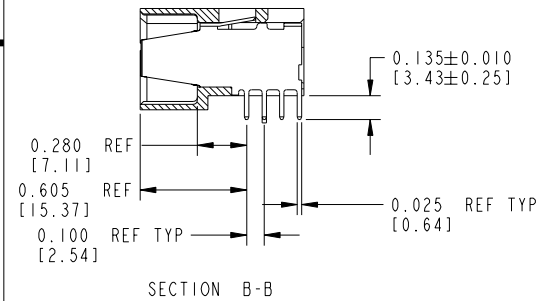
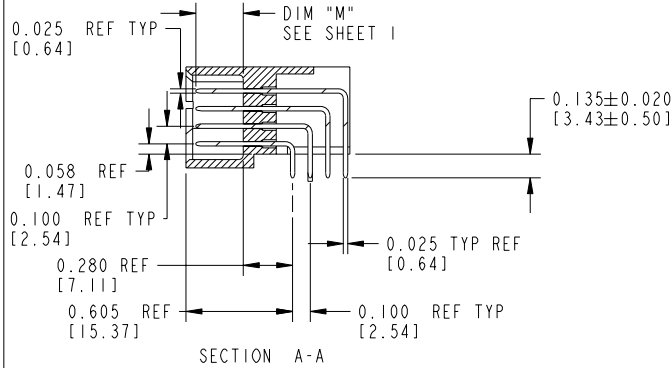
STATUS: Released

Printed: Aug 11, 2007

Tous droits strictement réservés. Reproduction ou communication à des tiers interdite sous quelque forme que ce soit sans autorisation écrite du propriétaire. Propriété de c FCI. Droits de reproduction FCI.

All rights strictly reserved. Reproduction or issue to third parties in any form whatever is not permitted without written authority from the proprietor. Property of FCI. Copyright FCI.

PRODUCT NUMBER
51672-XXX_-
NOTE: (2)
SEE SHEET 1



RECOMMENDED PCB LAYOUT

CONFIDENTIAL

mat'l code		SEE NOTE 1		tolerances unless otherwise specified		CUSTOMER COPY		 www.fciconnect.com	
ltr	ecn no.	dr	date	linear	.XX±.01/.XX±.3	projection		title	
E					.XXX±.005/.XX±.13			3ACP + 36S + 5P	
				angles	.XXX±.0020/.XXX±.051		RIGHT ANGLE SOLDER HEADER		
				dr	0°±2°	INCH/MM	product family		
				enr		scale	PWRBLADE		
				chr	C. BAROT 12-08-99	1:1	code		
				appd	J. BROWN 12-08-99		213		
					J. BROWN 12-08-99		sheet		
							2 of 3		
sheet index	revision sheet								

cage code 22526

Pro/E

PDM: Rev:E

STATUS: Released

Printed: Aug 11, 2007

Tous droits strictement reserves. Reproduction ou communication a des tiers interdite sous quelque forme que ce soit sans autorisation écrite du propriétaire. Propriete de c FCI. Droits de reproduction FCI.

All rights strictly reserved. Reproduction or issue to third parties in any form whatever is not permitted without written authority from the proprietor. Property of FCI. Copyright FCI.

PRODUCT NUMBER
51672-XXX_- NOTE: ②
SEE SHEET 1

CONNECTOR NOTES:

- HOUSING MATERIAL: UL94 V-0 GLASS FILLED HIGH TEMP. THERMOPLASTIC.
- SIGNAL PIN MATERIAL: COPPER ALLOY.
- POWER CONTACT MATERIAL: COPPER ALLOY.
- PLATING:

51672,51672LF,PLATING SPEC SEE PRINT:100064183.

- MANUFACTURER'S NAME, P/N, AND DATE CODE TO APPEAR ON THIS SURFACE.
- PRODUCT SPECIFICATION GS-12-149.

PCB NOTES:

- ALL DIMENSIONS ARE BASIC UNLESS OTHERWISE SPECIFIED.
- ALL THROUGH HOLES ARE LOCATED WITH A TRUE POSITION OF 0.004[0.10]
- ALL HOLE DIAMETERS ARE FINISHED HOLE SIZE
- Ø0.098 [2.49] THROUGH HOLES ARE UNPLATED
- Ø0.0453±0.0010[1.151±0.025] DRILLED HOLES PLATED WITH 0.0003[0.008] MIN SnPb OVER 0.001[0.03] to 0.003[0.08] Cu PLATING TO ACHIEVE A 0.040±0.003[1.02±0.07] HOLE

CONFIDENTIAL

mat'l code		NOTE 1		tolerances unless otherwise specified		CUSTOMER		A FCI www.fciconnect.com	
ltr	ecn no.	dr	date	linear	.XX±.01/.XX±.3	COPY		projection	title
E					.XXX±.005/.XX±.13				3ACP + 36S + 5P RIGHT ANGLE SOLDER HEADER
				angles	.XXX±.0020/.XX±.051				
					0°±2°				
				dr	C. BAROT 12-08-99	INCH/MM		product family	PWRBLADE
				enr	J. BROWN 12-10-99	scale		size	dwg no
				chr	J. BROWN 12-08-99	1:1		A	51672
				appd	J. BROWN 12-08-99			code	213
sheet index	revision sheet							sheet	3

cage code 22526 4

PDM: Rev:E

STATUS:Released

Printed: Aug 11, 2007